



Care and use instructions

WARNING

- Careful: The beverage you are about to enjoy is very hot. For best result always use caution.
- Always depress the AUTOSEAL® button, when the mug is in the upright position before tipping to drink. This will release any build up pressure. Release the button when done drinking to automatically seal.
- Keep out of reach of children when filled with liquids.

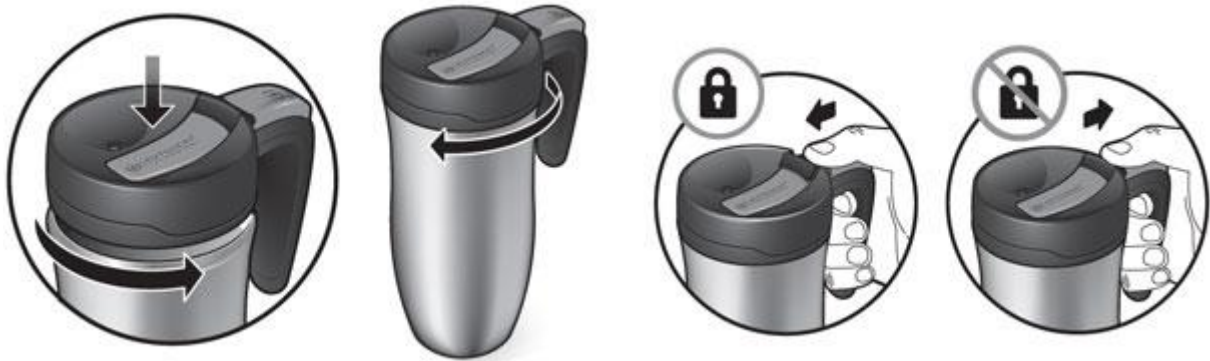


- Prior to drinking, make sure the lid is properly threaded to the body and screwed down completely.
- If filling with boiling liquid to cool down WITH THE LID OFF for at least 3 minutes before attaching the lid.
- Avoid accidental depressing of the AUTOSEAL button by keeping the button free and clear of other objects.

USAGE RECOMMENDATIONS

- Suitable for cold and hot beverages.
- To screw the lid on easily and safely place lid on top of mug. Apply slight downward pressure. Rotate counter clockwise until you hear a click whe the lid falls into place. Rotate lid clockwise to tighten.
- The AUTOSEAL® lid that came with your new purchase is designed to fit your mug design. Not for use with other products.
- The AUTOSEAL® lid is designed to help prevent spill.

contigo®



CLEANING INSTRUCTIONS

- Following your purchase wash all parts with soapy water before use. Rinse thoroughly and dry. Always store with lid removed to allow parts to dry completely.
- All lids are top rack dishwasher safe.
- If you have purchased a mug that has a brushed stainless steel body (not colored or painted body) ,the body is top-rack dishwasher safe.
- If you have purchased a mug that has a colored or painted body, it is recommended that it is hand washed.

